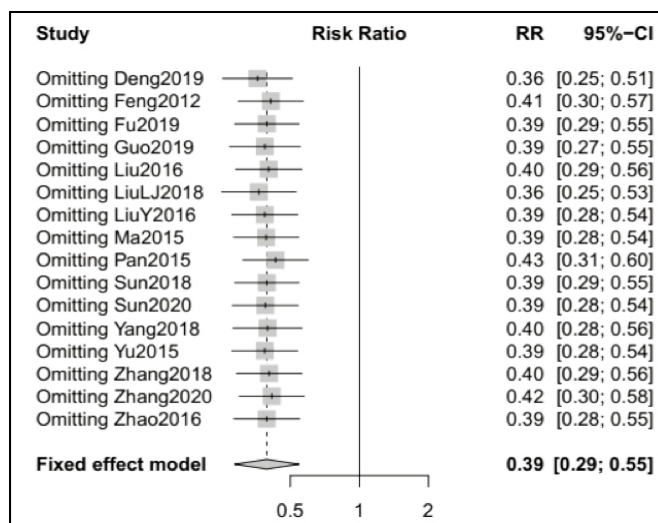
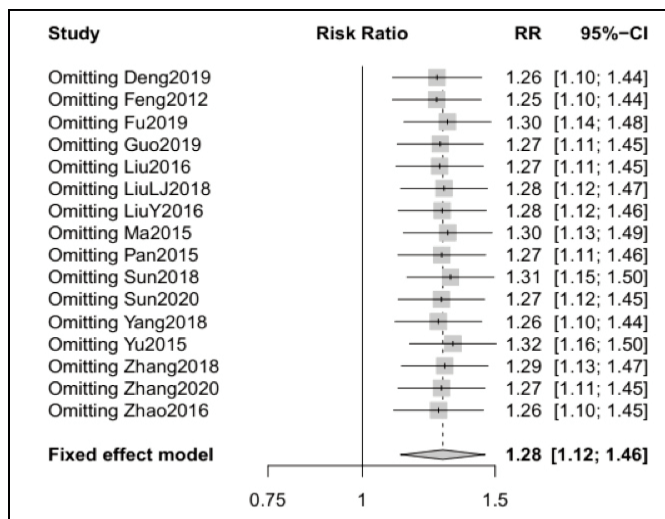


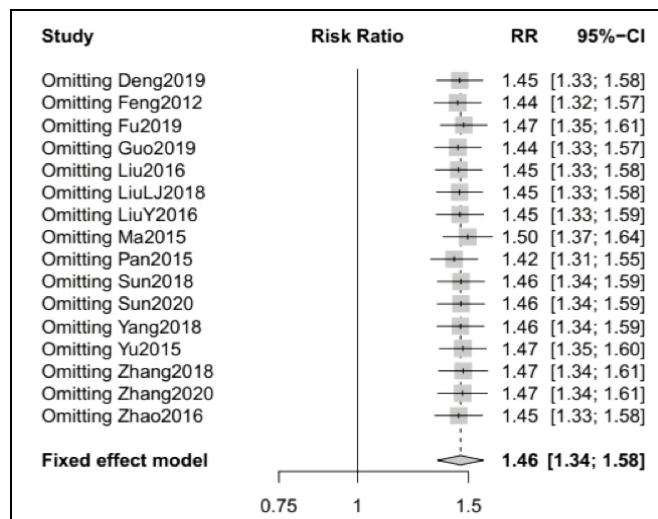
Supplementary Figure 1: Forest plot of senesitivity for CR.



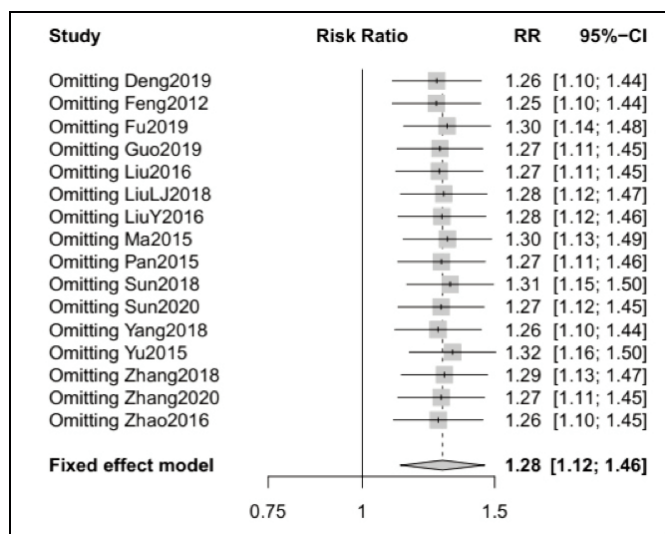
Supplementary Figure 4: Forest plot of senesitivity for PD.



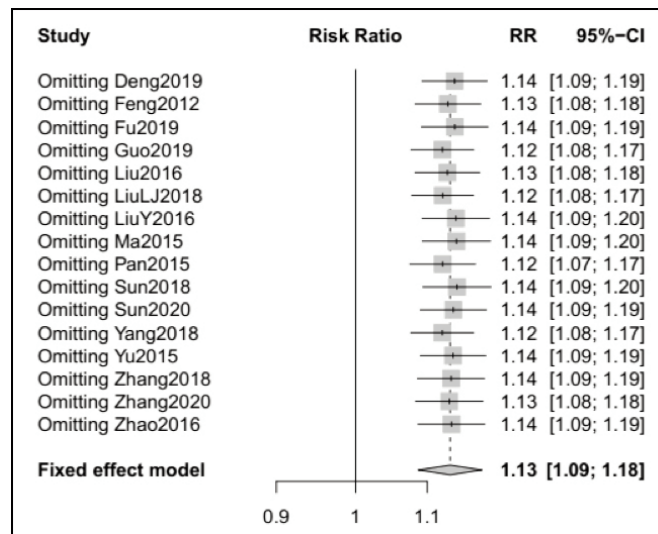
Supplementary Figure 2: Forest plot of senesitivity for PR.



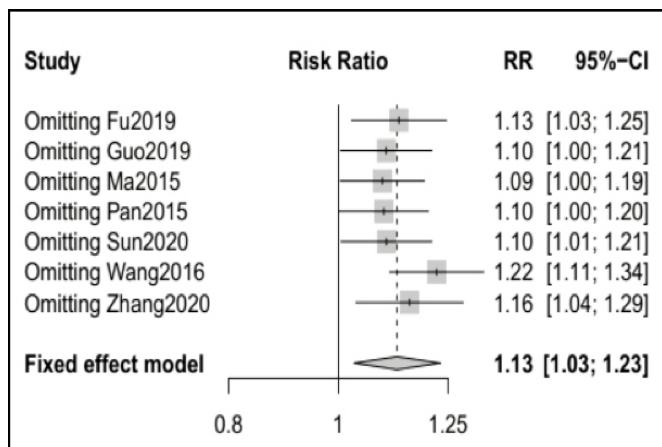
Supplementary Figure 5: Forest plot of senesitivity for ORR.



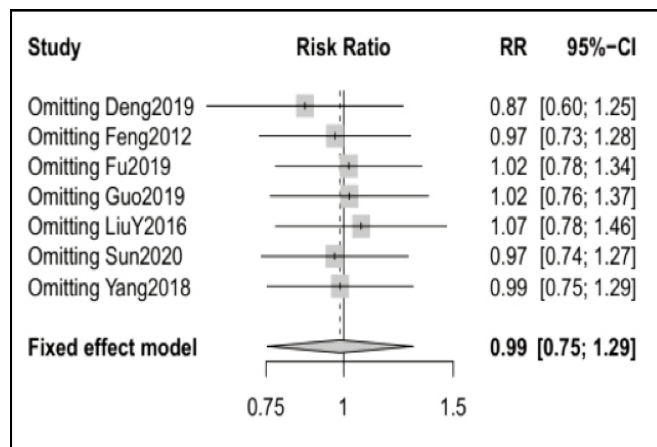
Supplementary Figure 3: Forest plot of senesitivity for S.



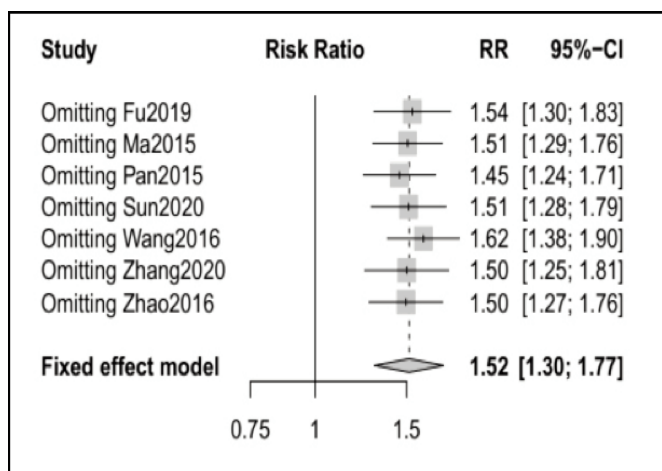
Supplementary Figure 6: Forest plot of senesitivity for DCR.



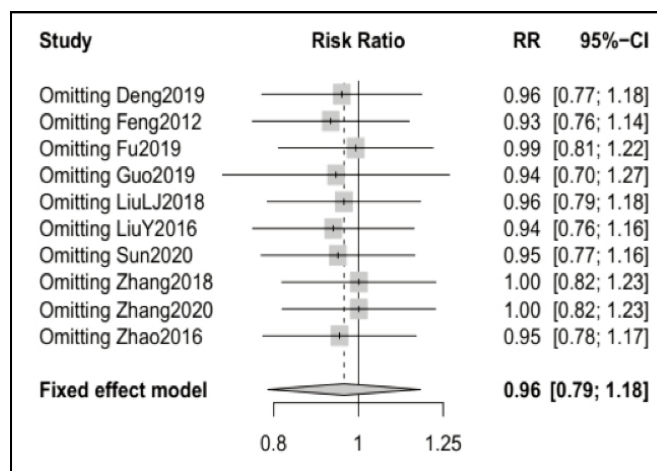
Supplementary Figure 7: Forest plot of sensitivity for one-year OS.



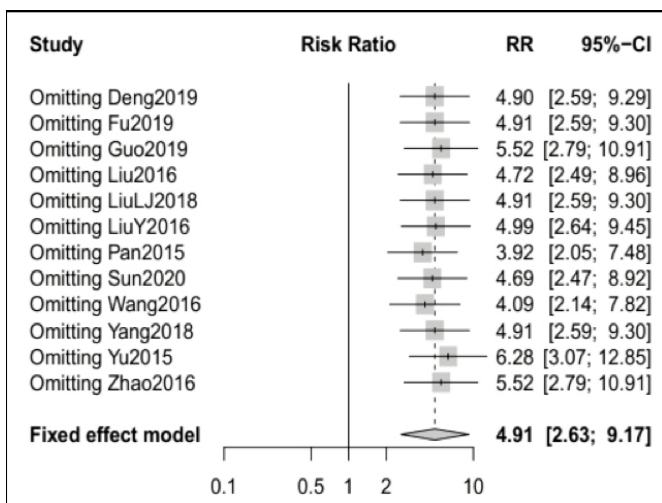
Supplementary Figure 10: Forest plot of sensitivity for myelosuppression.



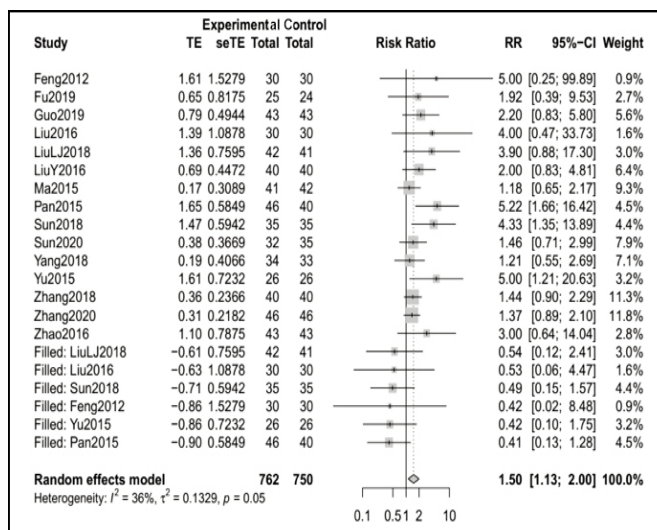
Supplementary Figure 8: Forest plot of sensitivity for two-year OS.



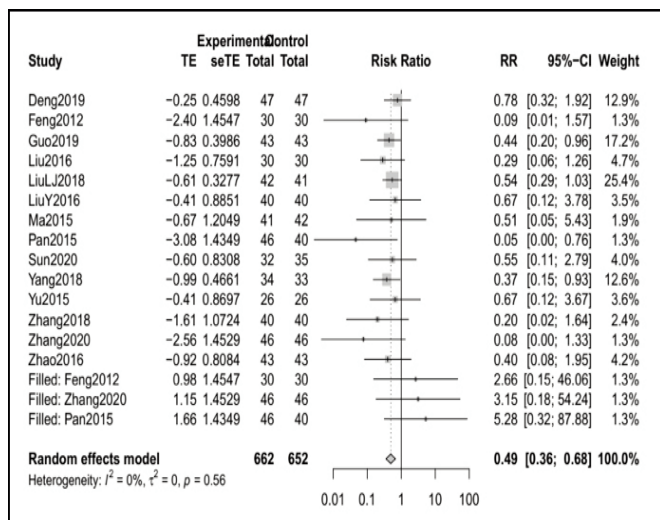
Supplementary Figure 11: Forest plot of sensitivity for gastrointestinal symptoms.



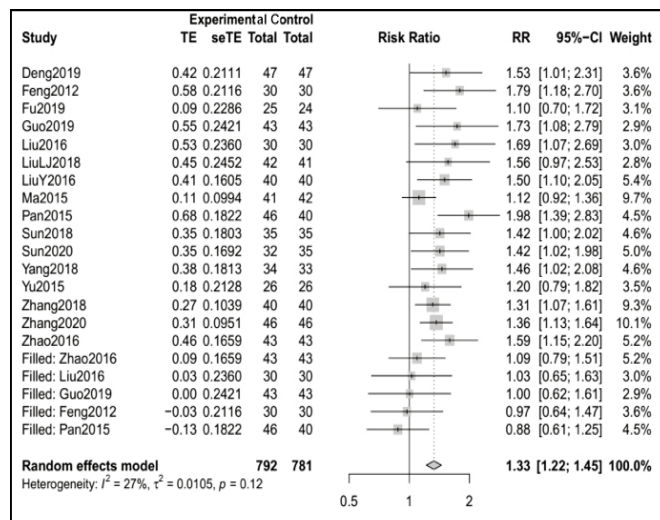
Supplementary Figure 9: Forest plot of sensitivity pneumothorax.



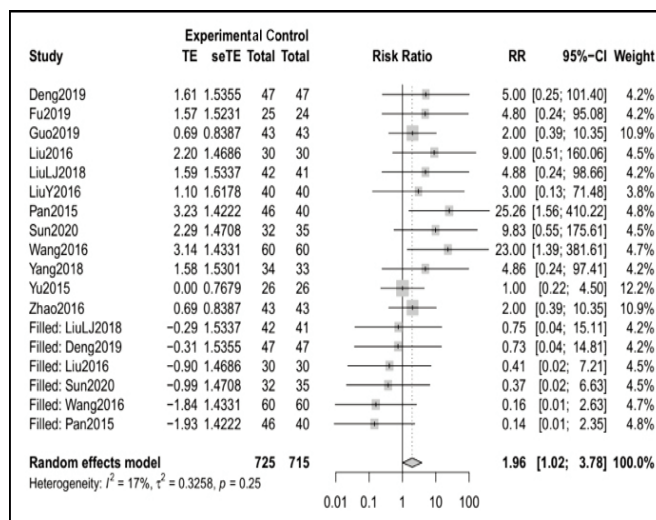
Supplementary Figure 12: Forest plot of studies evaluating adjusted RR of CR.



Supplementary Figure 13: Forest plot of studies evaluating adjusted RR of PD.



Supplementary Figure 14: Forest plot of studies evaluating adjusted RR of ORR.



Supplementary Figure 15: Forest plot of studies evaluating adjusted RR of pneumothorax.

